



NAME _____ DATE _____

ADDITION OR SUBTRACTION

Solve using place value strategies. Use the arrow way or mental math and record your answers. You may use scratch paper if you like.

1) $700 + 239 = \underline{\quad}$.

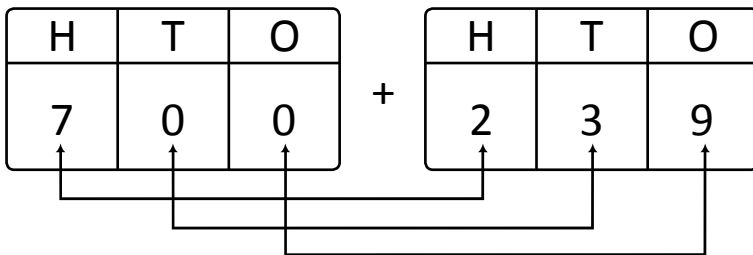
Place value:

7 hundreds + 2 hundreds 3 tens 9 ones = hundreds tens ones.

Arrow way:

$$700 \xrightarrow{\quad} 800 \xrightarrow{+100} \underline{\quad} \xrightarrow{+10} \underline{\quad} \xrightarrow{\quad} \underline{\quad} \xrightarrow{\quad} 930 \xrightarrow{+9} \underline{\quad}$$

Mental math:



Place value totals:

Hundreds = + =

Tens = + =

Ones = + =

2) $119 + \underline{\quad} = 519$.

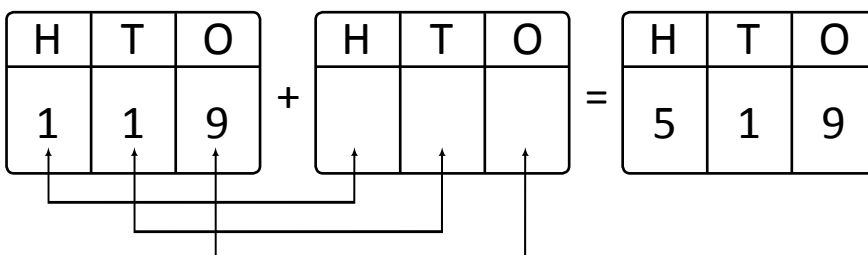
Place value:

1 hundred 1 ten 9 ones + hundreds = 5 hundreds 1 ten 9 ones.

Arrow way:

$$119 \xrightarrow{+100} \underline{\quad} \xrightarrow{\quad} 319 \xrightarrow{\quad} \underline{\quad} \xrightarrow{\quad} 519$$

Mental math:



Place value totals:

Hundreds = $1 + \underline{\quad} = 5$

Tens = $1 + \underline{\quad} = 1$

Ones = $1 + \underline{\quad} = 9$