



NAME \_\_\_\_\_

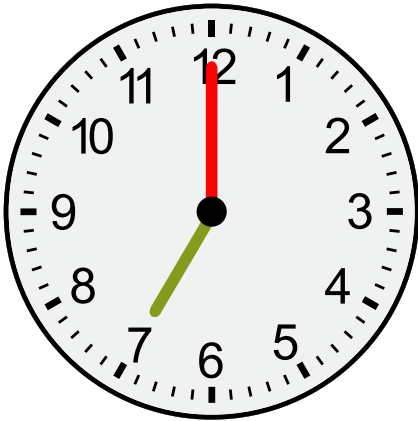
DATE \_\_\_\_\_

## APPLICATION OF FRACTIONS TO TELL TIME

Solve elapsed time problems involving whole hours and a half hour.

- 1) Marcus took a road trip. He left on Monday at 7:00 a. m. and drove until 4 p. m. on Tuesday. Marcus drove from 6:00 a. m. to 3:30 p. m. How long did he did he drive on Monday and Tuesday?

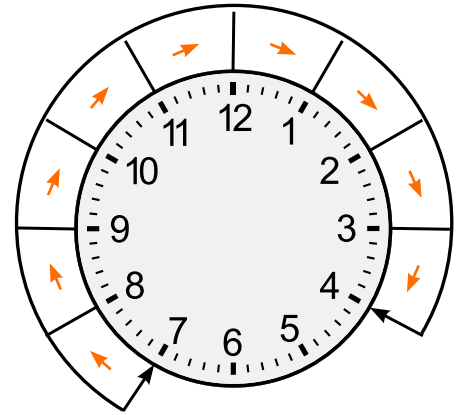
**Solution:**



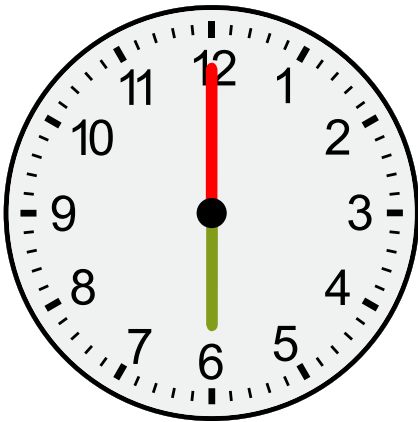
Road trip starting hour  
On Monday (7 a.m.)



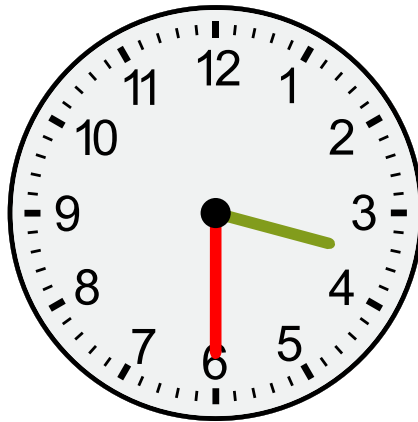
Road trip closing hour  
Monday (4 p.m.)



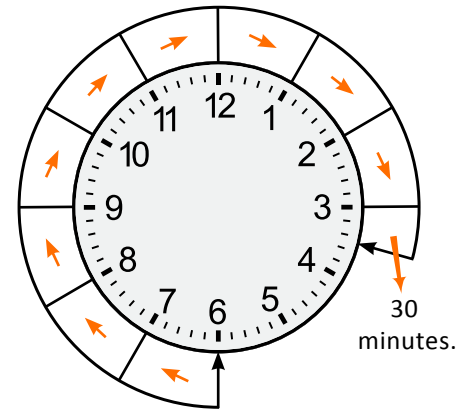
\_\_\_ hours.



Road trip starting hour  
On Tuesday (6 a.m.)

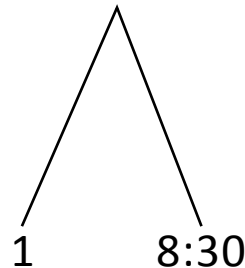


Road trip closing hour  
On Tuesday (3:30 p.m.)



\_\_\_\_\_ hours.

Total time taken for road trip in the two days = 9 + 9:30.



= 10 + 8:30 = \_\_\_\_\_ hours.