



NAME _____ DATE _____

ADDITION OR SUBTRACTION

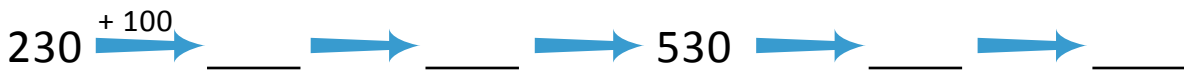
Solve using place value strategies. Use the arrow way or mental math and record your answers. You may use scratch paper if you like.

1) $230 + 500 = \underline{\hspace{2cm}}$.

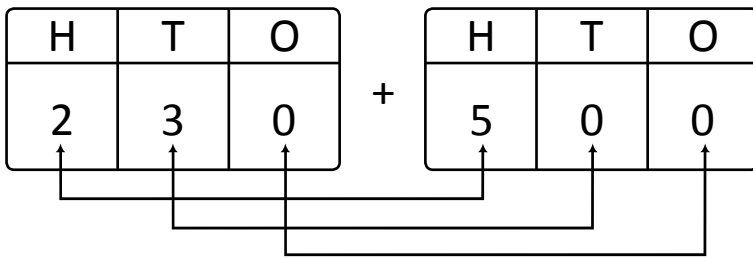
Place value:

2 hundreds 3 tens + 5 hundreds = hundreds tens.

Arrow way:



Mental math:



Place value totals:

Hundreds = + =

Tens = + =

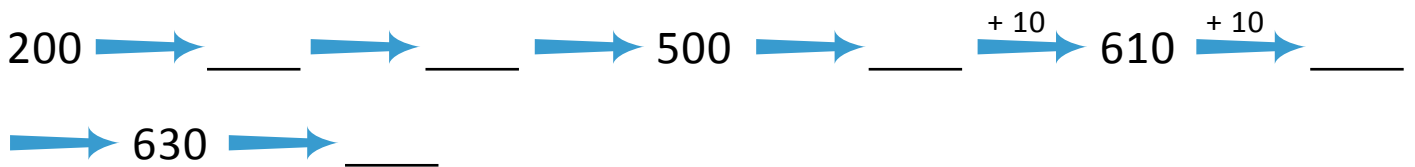
Ones = + =

2) $200 + 440 = \underline{\hspace{2cm}}$.

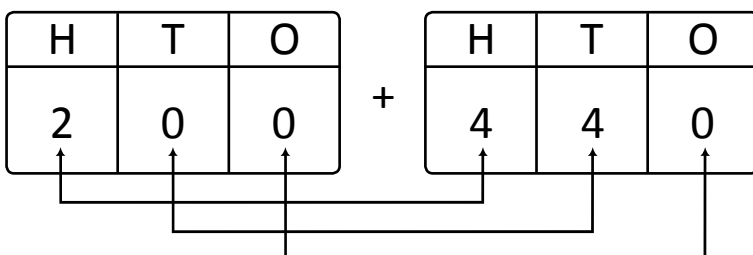
Place value:

2 hundreds + 4 hundreds 4 tens = hundreds tens.

Arrow way:



Mental math:



Place value totals:

Hundreds = + =

Tens = + =

Ones = + =